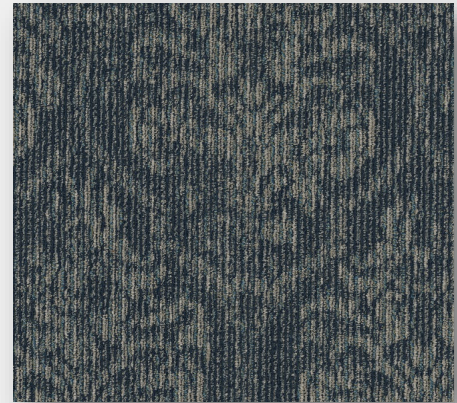


Distinctive Contract

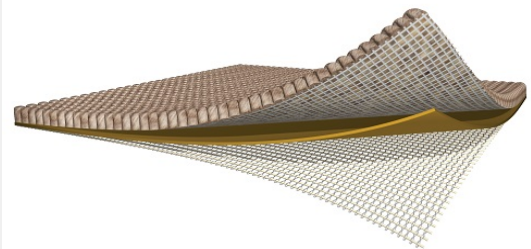
Specifications & Warranty

Classic Transitions Contract

Date 1/14/2019
Style# 4852C
Construction Multi-Level Patterned Loop
Fiber Content Eco Solution Q Nylon
Dye Method Solution Dyed
Width 12 Foot
Gauge 1/12
Stitches per Inch 11
Primary Backing Woven Synthetic
Secondary Backing StaLok®
Pile Height .123 in
Pattern Repeat 36" W x 64" L
Face Weight 24 oz sq yd
Density is important to determine how a carpet performs. The higher the density the better it performs. 4.000 is moderate
Density Factor
Average Density 7,024 oz/cu yd
Installation Method Direct Glue/Stretch In over 8lb contract pad
Traffic Class Heavy
Radiant Panel Class 1-ASTM E -648
Pill Test Pass (DOC FF-1-70)
NSB Smoke Less than 450 ASTM E-662
Static Less than 3.5 KV
Type Static Control Permanente
Indoor Air Quality (Green Label) GLP2271



StaLok® Backing



Stalok is a broadloom backing system made with a high performance SBR latex pre-coat and a high performance SBR secondary coat laminated to a woven secondary backing.

10 YEAR LIMITED COMMERCIAL WARRANTIES

When Does a Warranty Begin?: This warranty begins when the carpet is purchased. This carpet must be installed in accordance with the Carpet and Rug Institute (CRI) installation guidelines. This carpet must be maintained in accordance with CRI guidelines for carpet cleaning and maintenance.

The Ten Year Warranty is further limited to the period of time the carpet is owned and maintained by the original purchaser.

Fiber-Abrasive Wear - Under normal use, carpet using our approved face fiber will lose no more than 10% of the pile face fiber, by weight, during the warranty period. This warranty does not cover appearance retention, matting and crushing and normal appearance changes in high traffic areas.

Fiber-Static Protection - Under normal use, carpet using our approved face fiber will not generate static build-up in excess of 3.5 kv, during the warranty period as tested by AATCC Test Method 134.

Backing-Edge Ravel - Under normal use, carpet coated with our high performance backing system will not edge ravel when seams are properly sealed per commercial installation guidelines.

Backing-Integrity/Delamination - Under normal use, the secondary backing on carpet coated with our high performance backing system will not delaminate from the face carpet.

Chair Pads are recommended under roller caster chair, to inhibit premature wear of the surface of the carpet.

This warranty does not cover burns, cuts, fading, matting, pills, pulls, odor, soiling, staining, tears or damage due to improper installation or due to improper cleaning agents or methods. Carpet installed on stairs or in areas subject to abnormal foot-traffic use (i.e. golf spikes, other spiked footwear, ski boots, and the like) is excluded.